



PRODUCT CATALOGUE

OCT 2012

SAVE UPTO 20% OFF YOUR ELECTRICITY BILL

EFERGY EUROPE
info.eu@efergy.com
(+44) 1143 272646

EFERGY USA
info.usa@efergy.com
(305) 470-9716

EFERGY CANADA
info.ca@efergy.com
(613) 395-3000

EFERGY AUSTRALASIA
info.aus@efergy.com
(+61) 130 079 9851

EFERGY CHINA
info.cn@efergy.com
(+86) 0517 8697 3515

CONTENTS

EFERGY PRODUCT CATALOGUE

EFERGY
About efergy 1
efergy Worldwide 2-3

PRODUCT PACKAGES
ennova 4
ecotouch 5
e2 6
elite 7

FEATURED PRODUCTS
ennova 8
ecotouch 9
home hub 10
engage 11

MONITORS & ACCESSORIES
e2 - Classic 12
e2 - IR 13
e2 - TPM 14
elite - Classic 15
elite - IR 16
elite - TPM 17
USB Dongle 18
Transmitters 19
Sensors 20
Product Comparison 21

ENERGY SAVING ADAPTORS
Energy Monitoring Socket 22
Remote Control Socket 23
Media Standby Eliminator 24
Footswitch Multisocket 25
Showertime 26


CONTACT US 27

ABOUT EFERGY


WHO WE ARE




efergy was founded in 2006 with the mission to become a global leader in providing energy saving products. We design attractive, inexpensive, energy monitoring products and interfaces which show simple current and historical feedback that are easy to understand. We provide a number of solutions to cater for a range of sectors including:




Energy monitoring displays




Online energy data gateways




Energy management software




Smart meter communications




Businesses



Utilities



Public Sector



Citizens

EENERGY WORLDWIDE

FIND US HERE



Our presence is worldwide with offices in the UK, United States, Canada, Hong Kong, China, Australia and South Africa.

Our representatives also operate in Singapore, Malaysia, Indonesia, South Korea, France, Portugal, Baltic states, Scandinavia and Greece. We have over 30 distributors worldwide.

Our high quality and affordable devices are acknowledged by numerous positive reviews ('the only 5-star monitor for the quality of information displayed', Which Magazine January 2011).

ENNOVA

ENERGY MANAGEMENT SYSTEM



The **ennova** package is our latest innovation in wireless energy management. The attractive, intelligent **ennova** monitor connects to a series of energy management sockets plugged into powerpoints around the home or office. You can then remotely monitor and control the power drawn by the appliances connected to each socket through the monitor. For the first time in **efergy** history you can now also review the energy you are generating via the **efergy** solar transmitter (sold separately, solar panel energy system must be installed). Compare targets set for your energy consumption against your energy generation on the touch-screen, high resolution dot-matrix display.

The **ennova** package comes with the monitor, transmitter, 1 sensor and 1 x **ennova** management socket as standard. Other accessories are available on demand.

* **efergy** retains the right to alter the design and specification of any product shown in literature or online prior to the release date

ECOTOUCH

ENERGY MANAGEMENT SYSTEM



The **efergy ecotouch** combines the simplicity of our legacy products such as the **elite** and **e2** with aspects of the management capabilities of the **ennova**. The clear and compact dot-matrix display is navigated by an intuitive touch-pad with various features available to make saving energy and money easier than ever before. Use the **ecotouch** to wirelessly control the power consumption of a variety of appliances connected to **ecosockets** around your home. Further manage and review your energy history using the provided **efergy elink** software. Graphical, numeric and colour changing LED displays combine to create an informative, interactive and intelligent product perfectly suited for tracking and managing the energy levels of your home.

The **ecotouch** package comes with the **ecotouch** monitor, transmitter, 1 x CT sensor and 1 x **ecosocket** as standard.

E2

WIRELESS ENERGY MONITOR



The **efergy e2** allows you to monitor your energy consumption via both the monitor and your PC or Mac with our **elink** energy management software.

The **e2** links to the transmitter and sensors installed near your electricity meter or fuse box and wirelessly updates at frequent intervals (these differ depending on which **e2** package you have selected) to show the real time consumption of your household in kWh and cost. Targets can be set and an alarm can be programmed to sound when you reach your max threshold.

The **e2** enables you to program multiple tariff rates to accurately track the cost of your energy consumption, including weekends off-peak and summer and winter tariffs. The **efergy e2** also allows you to review your hourly, daily, weekly and monthly history all from the monitor itself.

The **e2** package comes with the **e2** monitor, transmitter and 1 x CT sensor as standard.

ELITE

WIRELESS ENERGY MONITOR



Our **elite** legacy package provides you with our entry level energy monitor to track your energy consumption at home and make immediate decisions on how much you should be consuming at any given time. The **elite** links to the transmitter and sensors installed near your electricity meter or fuse box and wirelessly updates at frequent intervals (these differ depending on which **elite** package you have selected) to show the real time consumption of your household in kWh and cost. Choose up to four different tariff settings to accurately calculate the cost of your energy through the summer, winter and during off-peak intervals on weekends. Affordable, simple and easy to use, the **elite** will provide you and the whole family everything you need to get started on saving energy and money in your home.

The **elite** package comes with the **elite** monitor, transmitter and 1 x CT sensors as standard.

ENNOVA

WIRELESS ENERGY MONITOR

Model No: E3-1.0



The **ennova** incorporates contemporary design as well as the latest features in home energy monitoring. You can graphically compare your energy consumption versus energy generation when used in conjunction with solar panels and our solar generation transmitter.

Features

- Monitors individual areas and current loads separately
- View consumption of individual appliances and switch them on and off
- Built in lithium-ion rechargeable battery
- Set energy consumption targets and review them via the **ennova** monitor
- Upload your energy consumption to your PC or laptop through our **elink** software
- Ambient colour changing LED display

Accessories

transmitter



solar transmitter



management socket



sensors



ECOTOUCH

WIRELESS ENERGY MONITOR

Model No: ET-1xSKT



Our **ecotouch** wireless energy monitor is part of our first energy management system. Use the **ecotouch** to wirelessly control the power consumption of a variety of appliances connected to **ecosockets** around your home. Further manage your energy using the **efergy elink** software.

Features

- Control appliances remotely using our wireless energy monitor and **ecosockets**
- Manage your energy data with **elink** on your PC or Mac
- Graphic and numeric data display
- Colour changing LED shows the energy levels of your home
- Summary list of recent energy use information
- Control your energy consumption instantly

Accessories

transmitter



ecosockets



mini CT sensor



XL CT sensor



HOMEHUB

ENERGY DATA GATEWAY

Model No: HH-1.0



The **homehub** combines the latest in design and metering technology to allow you to monitor your energy use online, from anywhere using our **engage** web platform and smartphone app. Compare your energy consumption to other users, share energy saving tips and set targets.

Features

- View energy use on our **engage** energy portal and smartphone app
- Download your daily, weekly, monthly or average data
- Instantly see the cost of using energy in your home
- Use the **homehub** to reduce your household energy
- Interact with other users via our **engage** energy portal and social media corner

Accessories

transmitter



mini CT sensor



breaker transmitter



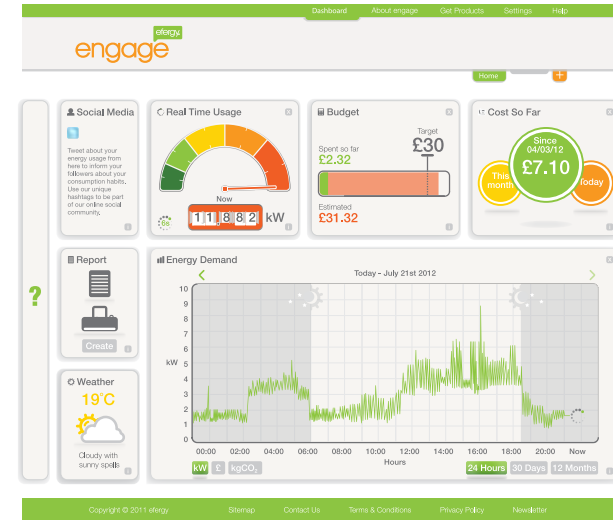
XL CT sensor



ENGAGE

ONLINE ENERGY PORTAL

Model No: ENG-1.0



engage embraces the next generation in home monitoring. The **engage** online energy portal is used in conjunction with the **homehub** to give near real time displays of energy usage, give you graphical views of your historical data and connect you with other users.

Features

- Can be accessed from anywhere using your PC, Mac or smartphone
- Data is synced via the **homehub** located at your home or office
- Alternatively data can be inputted manually for use without the **homehub** product
- Clean, simple but powerful user interface and tools
- Connect directly to our social media community as well Facebook and Twitter to share tips, compare data and win prizes.

Accessories

iPhone App



E2 - CLASSIC

WIRELESS ENERGY MONITOR

Model No: E2-UK



The **e2** works as a stand alone wireless energy monitor as well as giving you the facility to upload your consumption data and manage it through the **elink** software on your PC or Mac. View your Instant, Average and Historical consumption in kWh, cost and carbon emissions.

Features

- Instantly see the cost of using energy in your home
- View your hourly, weekly, monthly or average data
- Monitor works with a number of transmitters
- Upload data to **elink** software for comprehensive energy management
- Tariff setting change from Summer to Winter rates automatically

Accessories

transmitter



mini CT sensor



breaker transmitter



XL CT sensor



E2 - IR

WIRELESS ENERGY MONITOR

Model No: E2-IR



Our **e2 IR** monitor differs from our **classic** offering as it is compatible with utility meters using infra-red output ports. The **e2 IR** updates every 30 seconds. The display shows real time data and allows you to make energy saving decisions, instantly reducing the cost of your utility bill.

Features

- Infra-red sensor adaptor for compatible utility meters
- View your hourly, weekly, monthly or average data
- Uses multiple tariff options including weekends off peak
- Automatically changes between seasonal tariff structures
- Tariff rates pre-programmed (or updated manually)

Accessories

transmitter



breaker transmitter



E2 - TPM

WIRELESS ENERGY MONITOR

Model No: E2-TPM



Our **efergy e2 true power meter** is our most accurate wireless energy monitor yet. The **e2 TPM** follows voltage, measures the phase angle to compensate for the power factor and displays demand in watts of energy based on the power consumption.

Features

- Tracks your utility voltage in real time
- Measures phase angle to compensate for power factor
- Displays in kilowatts based on true power consumption
- Instantly see the cost of using energy in your home
- Uses multiple tariff options including weekends off peak
- Clear, portable compact display

Accessories



ELITE - CLASSIC

WIRELESS ENERGY MONITOR

Model No: ELITE-4.0



Our **elite classic** monitor gives you a real time display of your current energy use and the cost of that energy along with many other features to help you monitor your consumption, save money and increase your energy efficiency.

Features

- Easy to set up and use
- Clear, portable compact display
- View your real time energy consumption (cost, carbon emissions and kWh)
- View historical daily, weekly or monthly data (cost, carbon emissions and kWh)
- Select up to 4 tariff settings
- Audio alert if you exceed your set maximum consumption target
- Identify and reduce your carbon footprint

Accessories



ELITE - IR

WIRELESS ENERGY MONITOR

Model No: ELITE-IR



Our **elite IR** differs from our **classic** offering as it is compatible with utility meters using infra-red output ports. The display shows real time data allowing you to make energy saving decisions from an easy to install and use package now synonymous with our **elite** range.

Features

- Infra-red sensor adaptor for compatible utility meters
- View your hourly, weekly, monthly or average data
- Uses multiple tariff options including weekends off peak
- Automatically changes between seasonal tariff structures
- Discover and reduce your carbon footprint

Accessories

transmitter

breaker transmitter



ELITE - TPM

WIRELESS ENERGY MONITOR

Model No: ELITE-TPM



The **elite TPM** follows voltage, measures the phase angle to compensate for the power factor and displays demand in watts of energy based on the power consumption. These features combine to provide unmatched accuracy and simplicity in an affordable package.

Features

- Tracks your utility voltage in real time
- Measures phase angle to compensate for power factor
- Displays in kilowatts based on true power consumption
- Instantly see the cost of using energy in your home
- Uses multiple tariff options including weekends off peak
- Select up to 4 tariff settings

Accessories

transmitter

breaker transmitter



mini CT sensor

XL CT sensor



USB RECEIVER

WIRELESS ENERGY MONITOR

Model No: USB-RX



The **efergy USB receiver** sends energy data from the transmitter and sensors installed near your electricity meter directly to the **elink** software on your PC or Mac. Use **elink** to view and manage your energy consumption, set targets and create and email energy reports.

Features

- See and stream real time power consumption to the **elink** software
- Use **elink** to compare multiple tariffs and utility providers
- Discover the advantages of shifting consumption to lower tariff rate periods
- Use the data collated to produce graphs and demand curves, set targets and print or email energy reports.
- Attractive yet durable design



TRANSMITTERS

WIRELESS ENERGY MONITOR



We have created a range of transmitters to match the specific needs of our customers. These transmitters can be matched with our **efergy e2** and **elite** range of monitors to create a wireless energy monitoring package that is just right for you.

Transmitter Types

- **TPM Transmitter** (plugs into mains)
Model number: TPM-TX
- **DC Transmitter** (DC adaptor to mains)
Model number: DC-TX
- **Battery Transmitter** (3 x AA batteries)
Model number: TX
- **Waterproof Transmitter** (suitable for properties that have an external meter)
Model number: WP-TX
- **Breaker Transmitter** (connects directly to a breaker-type electricity panel/ meter)
Model number: DIN

Accessories

transmitter breaker transmitter



waterproof transmitter



SENSORS

WIRELESS ENERGY MONITOR



We also offer a range of sensors compatible with your **e2** and **elite** wireless energy monitor and transmitter. The sensors you choose depend on the diameter of the live feed cables located within your electricity meter/ panel/ fusebox. These vary from country to country.

Features

- IR Sensor
Programmable to: 100 - 10000imp/kWh
Model Number: IR-SR
- micro CT Sensor
10mm dia, 70A max current
Model Number: MIC-SR
- mini CT Sensor
13mm dia, 100A max current
Model Number: MIN-SR
- XL CT Sensor
19mm dia, 200A max current
Model Number: XL-SR

PRODUCT COMPARISON

CHOOSE YOUR MONITOR

Key

✓ Available Now

✓ Available Soon

FEATURES	ELITE CLASSIC	ELITE IR	ELITE TPM	E2 CLASSIC	E2 IR	E2 TPM	ENNOVA	ECOTOUCH	HOME HUB & ENGAGE	USB DONGLE
IR Sensor compatible		✓			✓		✓	✓		✓
DIN Rail Breaker compatible	✓			✓			✓	✓	✓	✓
Solar generation compatible							✓			
elink software compatible				✓	✓	✓	✓	✓		✓
Realtime data in elink							✓	✓		
Manage appliances remotely							✓	✓		
Dot matrix display							✓	✓		
Fixed segment display	✓	✓	✓	✓	✓	✓				
Graphical Data Display							✓	✓		
Rechargeable battery							✓	✓		✓
Compatible with engage									✓	
Energy generation display					✓		✓			
Ambient light feedback							✓	✓		
True Power Meter accuracy			✓			✓				
Humidity & temperature	✓	✓	✓					✓	✓	
Multilingual menu							✓	✓	✓	✓

ENERGY MONITORING SOCKET

ENERGY SAVING ADAPTOR

Model No: EMS-UK



The **efergy energy monitoring socket** measures the energy efficiency of your plug-in appliances. Track the kilowatts used by your appliances and how much they are costing you. You can then reduce the use of a costly appliance or replace it with a more efficient one.

Features

- Understand your energy usage & cost and how to reduce it
- Multiple displays show you many combinations of energy data
- Identify and reduce the usage of certain devices to save money
- Plug and play product - simple installation and set-up
- Large display for easy viewing

Socket Configurations

The **EMS** product is configured for the following countries:

- | | |
|------------------|-----------|
| - United Kingdom | - Germany |
| - France | - Italy |
| - Switzerland | - USA |
| - Australia | - Israel |
| - South Africa | |

REMOTE CONTROL SOCKET

ENERGY SAVING ADAPTOR

Model No: RCS-4-AU



Our **remote controlled socket** product allows you to turn off appliances from the powerpoint with the touch of a button, helping you to save both electricity and money. Keep the remote control in a handy place so you will remember to use it to maximise your energy savings.

Features

- Turn power points on and off remotely
- Makes reducing your electricity bills easier
- Simple installation and set-up
- Control up to four power points from the remote

Socket Configurations

The **remote controlled socket** is configured for the following countries:

- | | |
|------------------|-----------|
| - United Kingdom | - Germany |
| - France | - Italy |
| - Switzerland | - USA |
| - Australia | - Israel |

MEDIA STANDBY ELIMINATOR

ENERGY SAVING ADAPTOR

Model No: MSE-UK



Our **media standby eliminator** turns off those devices that still draw power when left on standby. Assign a button on your television remote to link with the infra-red eliminator and simply press it to turn the power off from the plug; eliminating standby and saving you money.

Features

- Eliminates the 'hidden' costs associated to leaving devices on standby
- Use the adaptor to eliminate standby on one device or attach it to a multisoocket and control them all
- Uses your existing media remote to control power rather than providing yet another
- Use any one of you media remotes to assign the on/ off button to
- Negates the need to physically approach and turn off each device at the power point

Socket Configurations

The **media standby eliminator** is configured for the following countries:

- | | |
|------------------|-----------|
| - United Kingdom | - Germany |
| - France | - Italy |
| - Switzerland | - USA |
| - Australia | - Israel |

FOOTSWITCH MULTISOCKET

ENERGY SAVING ADAPTOR

Model No: FS-UK



The **efergy footswitch multisoocket** is simple to use and helps you to start saving energy and money immediately. When you have finished using the connected appliances simply tap the footswitch to turn them off completely without having to access a hard to reach power point.

Features

- Save up to 10% from your energy bill by turning products off and avoiding standby
- Ideal for places where power points are in hard to reach locations
- Large, impact resistant footswitch with extra long cord
- Connect up to six appliances using the multisoocket
- Lengthen the life-span of your appliances by 15% by avoiding standby

Socket Configurations

The **footswitch multisoocket** product is configured for the following countries:

- | | |
|------------------|-------------|
| - United Kingdom | - Germany |
| - France | - Australia |

SHOWERTIME

WATER SAVING MONITOR

Model No: ST-V2



The **efergy showertime** product helps you to reduce the amount of water you use whilst showering. Use the bag provided to calibrate the rate of waterflow from your shower head and then set an alarm sensitive to either the volume of water or the time you spend in the shower.

Features

- Easy and accurate calibration and set-up
- Attractive, water resistant design
- Measure your water usage by volume in either litres, gallons or US gallons.
- Digital clock and programmable audio alarm
- Suction cap for easy application to tiles or glass
- Clear visual graphic display



CONTACT US

PRODUCT PURCHASING INFORMATION

EFERGY EUROPE
info.eu@efergy.com
(+44) 1143 272646

EFERGY AUSTRALASIA
info.aus@efergy.com
(+61) 130 079 9851

EFERGY USA
info.usa@efergy.com
(305) 470-9716

EFERGY CHINA
info.cn@efergy.com
(+86) 0517 8697 3515

EFERGY CANADA
info.ca@efergy.com
(613) 395-3000

Please feel free to contact the **efergy** team, wherever you are in the world, if you have any questions about our product line or if you would like to place an order. You can also do this via our website at www.efergy.com.

EFERGY HQ: efergy, Langley House, 320 Main Road, Darnell, Sheffield, S9 4QL, UK